

MONTHLY MEMBERSHIP PROGRESS REPORT

LOCATION GUAM

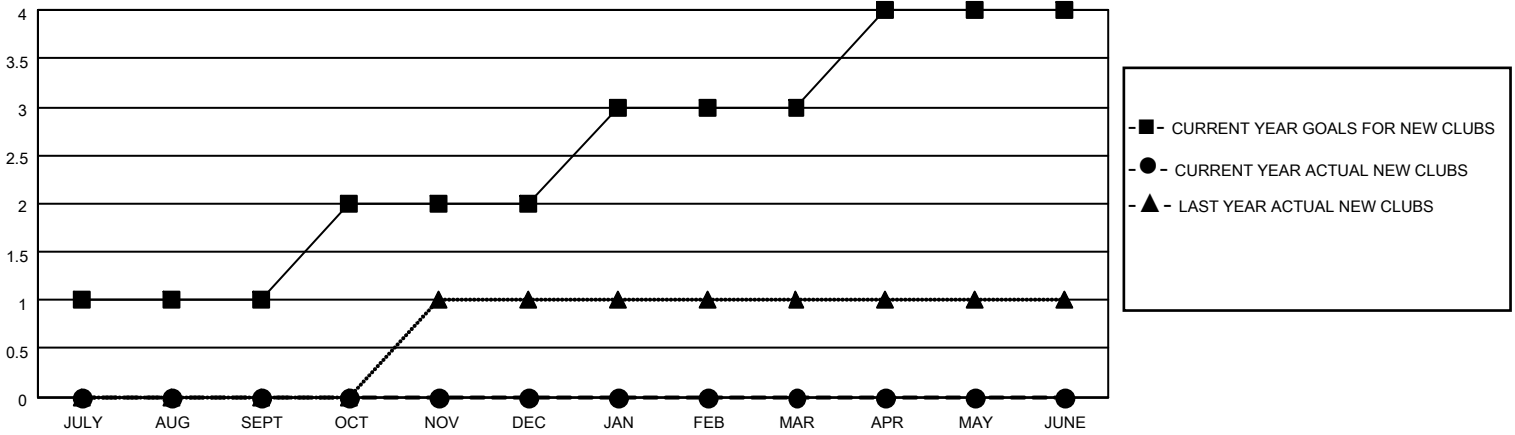
District 204

Results as of: 4/30/2022

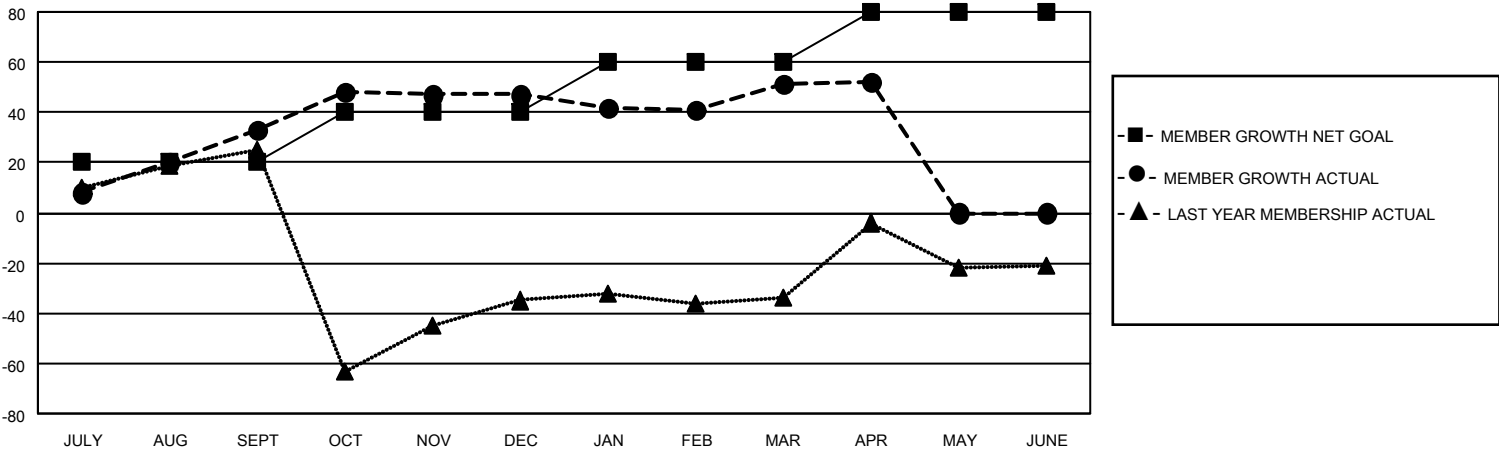
Clubs			
RESULTS FOR 2021-2022			
QUARTER	NEW CLUB GOAL	NEW CLUBS	DROPPED CLUBS
JULY/AUG/SEPT	1	0	0
OCT/NOV/DEC	1	0	0
JAN/FEB/MAR	1	0	0
APR/MAY/JUNE	1	0	0

Members			
RESULTS FOR 2021-2022			
QUARTER	MEMBER GROWTH NET GOAL	MEMBER GROWTH ACTUAL	DROPPED MEMBERS ACTUAL (including transfers)
JULY/AUG/SEPT	20	77	40
OCT/NOV/DEC	20	35	21
JAN/FEB/MAR	20	28	24
APR/MAY/JUNE	20	17	12

GOALS AND ACTUAL NEW CLUBS CUMULATIVE



GOALS AND ACTUAL MEMBERS CUMULATIVE



DROPPED CLUBS: 0	20 CLUBS OF 26 ADDED 1 OR MORE NEW MEMBERS	<p style="text-align: center;"><u>GENDER DISTRIBUTION</u></p> MALE 311 (34.87%) FEMALE 581 (65.13%) NON BINARY 0 (0.00%) PREFER NOT TO ANSWER 0 (0.00%)
<p style="text-align: center;"><u>DROPPED MEMBERS</u></p> DECEASED 7 CLUB CANCELLED 0 OTHER 90 <hr/> TOTAL 97	CLICK HERE FOR CUMULATIVE MEMBERSHIP DATA	TOTAL FAMILY UNIT MEMBERS 212 FAMILY MEMBERS PAYING HALF DUES 113